

TAKSTAR® 得胜



MX3 | 调音台式直播声卡
Mixer Webcast Sound Card

使用手册 | User Manual

■ 前言

尊敬的用户：

感谢您选购得胜MX3调音台式直播声卡，为了您能够更好的了解使用本产品，建议您在使用前仔细阅读本说明书。

若存在有疑问或者您有宝贵的建议，可通过拨打得胜官方服务热线400 6828 333或微信扫描二维码关注得胜官方公众号与我们联系。



■ 产品特性

- 专业舞台演唱级混响，混响大小及混响时间独立控制，全面提升演唱效果；
- 专业级数字运放电路，强大推力与动态，轻松驾驭市面上各类专业麦克风；
- 两路话筒均衡独立调节，方便对不同麦克风，不同人群声音特点进行调节；
- 12级降噪幅度可调，可根据周围环境的嘈杂程度，调节降噪幅度；
- 12级闪避强度可调，可调节音乐恢复时间长短，满足更专业的直播用户需求；
- 左右声道平衡功能，可使左右声道声音大小快速变化，嗨爆直播现场；
- 具有16种主播特效，其中4种自定义特效可自由更换，直播更具趣味性；
- 多彩炫酷的RGB灯光效果，可通过灯控按键切换灯光变化效果；
- 三路麦克风接口，方便连接多路麦克风，轻松驾驭多人直播的需求；
- 配备Φ6.35mm乐器接口，适用于电吉他、贝斯等专业乐器；
- 双路OTG手机接口，苹果、安卓直连，无需转接，真无损立体声传输；
- 内置大容量锂电池，可连续直播约5小时，直播续航有保障。

■ 系统要求

电脑: Windows 7/8/10/11

USB协议: USB1.1/2.0/3.0

MAC: macOS(10.10或更高)

手机: Android6.0以上, iOS9.0以上

■ 适用范围

K歌、直播、录音

■ 产品配置

- MX3声卡.....1台
- 直播音频线.....1条
- C2-5 OTG数据线.....1条
- 电脑数据线.....2条
- Φ 6.35mm转换插头.....1个
- 说明书.....1份

■ 技术参数

主机参数

- 数据传输：USB2.0
- 采样率：48KHz/16bit
- 频率响应：20Hz-20KHz(± 3 dB)
- 总谐波失真：THD $<0.5\%$ 1KHz
- 耳机输出功率：167.7mW/32 Ω
- 耳机信噪比：90dB (A-Weighted)
- 净重：约966g
- 尺寸：287*151*58mm (长*宽*高)
- 频率范围：2400-2483.5MHz
- 调制方式：GFSK, $\pi/4$ DQPSK, 8DPSK
- 占用带宽： ≤ 3 MHz
- 发射功率： ≤ 20 dBm(EIRP)

接口详情

- 耳机接口*2 ($\Phi 6.35$ mm、 $\Phi 3.5$ mm)
- 伴奏接口*1 ($\Phi 3.5$ mm)
- 话筒接口*3 (XLR+ $\Phi 6.35$ mm*2、 $\Phi 3.5$ mm*1)
- 乐器接口*1 ($\Phi 6.35$ mm)

电池参数

- 电池类型：锂离子电池
- 充电方式：DC 5V/1A
- 电池容量：4400mAh
- 充电时间：约4小时
- 使用时间：约5小时 (48V关闭时)
约4小时 (48V开启时)
- 充电温度：0至45°C
- 工作温度：-10至60°C

- 音箱接口*1 ($\Phi 3.5$ mm)
- 电脑接口*1 (Type-C)
- 手机接口*3 (Type-C*2、 $\Phi 3.5$ mm*1)
- 充电接口*1 (Type-C)

关于声卡使用温度的说明：建议在正常温度范围内使用声卡，以确保电池的最佳性能和安全性。如果在高于工作温度范围的炎热环境中使用声卡，可能会永久性缩短电池续航能力。如果在低于工作温度范围的寒冷环境中使用声卡，可能会暂时缩短电池续航能力，并可能导致声卡关机。携声卡返回温度较高的环境时，电池续航能力将恢复正常。如果温度过低，声卡可能无法充电，或者可能会停止充电。

注：以上数据由得胜实验室测试得到，并拥有最终解释权。

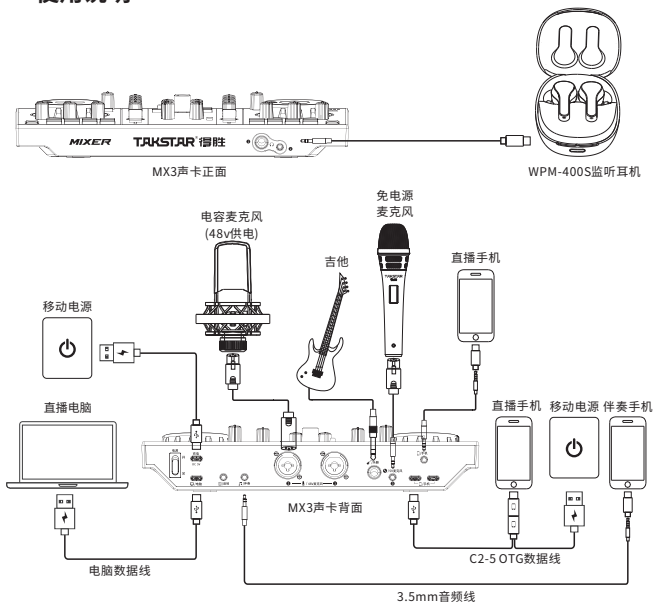
- ① 电量指示灯：电池符号有四格，一格为25%电量。剩一格时，红灯亮起，表示声卡处于电量不足状态，需及时充电。充电时，逐格流水点亮指示灯，充满电时，指示灯满格显示；
- ② 48V开关：共有2个48V按键，点按开启或关闭1、2路话筒的48V供电。开启时，48V指示灯常亮红灯；关闭时，48V指示灯熄灭；
- ③ 10dB按键：点按开启或关闭话筒10dB增益，分别控制1、2、3路话筒增益。开启时，10dB指示灯常亮蓝灯，此时话筒音量增加10db，关闭时指示灯熄灭；
- ④ 降噪按键：点按开启或关闭话筒降噪功能。开启时，降噪指示灯常亮绿灯，此时屏蔽环境噪声的拾取，关闭时指示灯熄灭，恢复正常拾音状态；
- ⑤ 原声按键：点按开启或关闭原声，控制1-3路话筒的原声切换。开启时，原声指示灯常亮蓝灯，效果切换到原声状态；关闭时指示灯熄灭，恢复到原来的效果；
- ⑥ 连麦按键：点按开启或关闭连麦。开启时，连麦指示灯常亮绿灯，此时电脑的播放器软件播放的伴奏声音不输出给直播间；关闭时指示灯熄灭，电脑播放的伴奏声可以输出给直播间；
- ⑦ 蓝牙按键：开启或关闭蓝牙功能。开启蓝牙时，蓝牙指示灯闪烁进入等待配对状态；蓝牙配对成功，指示灯常亮；关闭时指示灯熄灭。配对方法详见说明书的“蓝牙配对”部分；
- ⑧ 静麦按键：点按开启或关闭静麦功能。开启时，静麦指示灯常亮红灯，此时禁止话筒拾取声音，关闭时指示灯熄灭，则恢复正常拾音状态；
- ⑨ 闪避按键：点按开启或关闭闪避功能。开启时，闪避指示灯常亮红灯，此时说话音乐会自动压低声音；关闭时指示灯熄灭，恢复正常状态；
- ⑩ 灯控按键：点按该按键可切换14种灯光效果，有五种单色常亮模式、七色呼吸模式、八种混彩常亮模式等；

- ⑪ 主播特效按键：共有16个主播特效按键，其中有12个固定特效；4个自定义特效，分别为A、B、C、D，自定义特效可通过配送的电脑特效软件进行自由更换。更换方法详见说明书的“自定义主播特效部分”。每个主播特效按钮下有指示灯，当点按某一主播特效时，开始播放该特效音，指示灯扫灯3次，结束后恢复常亮状态。播放某一特效过程中，如果再次点按该特效按键，将停止播放该特效并停止扫灯；
- ⑫ 电音按键：点按开启或关闭电音功能。开启时，电音指示灯常亮橙灯，关闭时指示灯熄灭，并恢复原来的效果；
- ⑬ 电音基调指示灯：12个电音基调指示灯，分别有C、Db、D、Eb、E、F、F#、G、Ab、A、Bb、B，当选择到对应的电音基调时，该电音基调的指示灯常亮橙灯；
- ⑭ 大调/小调切换按钮：拨到“大调”位置时为电音大调，拨到“小调”位置时为电音小调；
- ⑮ 电音基调切换按键：点按“▲”从右到左顺序切换电音基调，点按“▼”从左到右顺序切换电音基调；
- ⑯ 电音速度旋钮：在电音效果开启的状态下，顺时针旋转增强电音强度，反之减少电音强度；电音效果关闭情况下，该旋钮不起作用；
- ⑰ 话筒音量旋钮：分别控制1路话筒、2/3路话筒音量。顺时针旋转增大，逆时针旋转减小，调节时话筒RGB灯圈会跟随旋转幅度逐个点亮或熄灭；
- ⑱ 话筒均衡旋钮1/2：分别控制1路话筒、2/3路话筒高、中、低音均衡，顺时针旋转增大，逆时针旋转减小；
- ⑲ 噪声门限旋钮：当降噪开启时，可调节话筒降噪强度。顺时针旋转增大降噪强度，逆时针旋转减小，根据环境的噪声情况进行调节，环境比较嘈杂时，噪声门限相应调大，反之减小；

- ⑳ 声道平衡旋钮：用于调节左右声道声音大小，调到中间为正常状态，往左调左边声音逐步增大，右边声音逐步减小，往右旋转则相反；
- ㉑ 耳机音量旋钮：分别调节1-2路耳机音量，顺时针旋转增大耳机输出音量，逆时针旋转减小耳机输出音量；
- ㉒ 音响音量旋钮：调节音箱输出音量，顺时针旋转增大音量，逆时针旋转减小音量；
- ㉓ 录音音量旋钮：调节输出给手机的音量，顺时针旋转增大音量，逆时针旋转减小音量；
- ㉔ 特效音量旋钮：调节特效输出音量，顺时针旋转增大音量，逆时针旋转减小音量；
- ㉕ 乐器音量旋钮：调节乐器的音量，顺时针旋转增大音量，逆时针旋转减小音量；
- ㉖ 激励器旋钮：调节话筒高、低频音色，使人声更具有磁性，顺时针旋转增大，逆时针旋转减小；
- ㉗ 混响大小旋钮：调节话筒混响大小，顺时针旋转增大混响量，逆时针旋转减小混响量；
- ㉘ 混响时间旋钮：调节话筒混响时间，顺时针旋转增大混响时间，逆时针旋转减小混响时间；
- ㉙ 话筒变声旋钮：调到中间为正常状态，从中间向右旋转使人声变得尖锐似孩童，从中间逆时针旋转使人声变得低沉似老牛；
- ㉚ 闪避强度旋钮：当闪避开启时，可调节1-3路话筒闪避强度，顺时针旋转音乐音量越来越小，逆时针旋转音乐音量越来越大。闪避开启时，对伴奏接口、蓝牙以及电脑播放的音乐起闪避作用，关闭时恢复正常；

- ③① 话筒音量指示灯：显示话筒音量大小，指示灯跟随话筒音量大小而变化；
- ③② 伴奏音量指示灯：显示伴奏音量大小，指示灯跟随伴奏音量大小而变化；
- ③③ 监听音量指示灯：显示监听音量大小，指示灯跟随监听的音量大小而变化；
- ③④ 外接音源推子：调节伴奏输入接口的音量，由下至上推动逐渐增大音量，反之音量减小；
- ③⑤ 蓝牙伴奏推子：调节蓝牙信号的播放音量，由下至上推动逐渐增大音量，反之音量减小；
- ③⑥ 耳机接口1：Φ6.35mm立体声耳机接口；
- ③⑦ 耳机接口2：Φ3.5mm立体声耳机接口；
- ③⑧ 话筒接口1-2：2个XLR与6.35mm合并式话筒接口，可接入48V电容话筒或动圈话筒；
- ③⑨ 话筒接口3：Φ3.5mm接口，用于动圈话筒和免电源电容话筒；
- ④⑩ 乐器接口：Φ6.35mm单声道乐器接口，用于连接吉他、电钢琴等乐器；
- ④⑪ 伴奏接口：通过配送的“直播音频线”与伴奏设备连接；
- ④⑫ 音响接口：Φ3.5mm立体声音箱输出接口，用于连接音箱；
- ④⑬ Φ3.5mm手机接口：Φ3.5mm手机接口，用于连接直播手机；
- ④⑭ Type-C手机接口：支持OTG功能，通过配送的“C2-5 OTG数据线”与手机连接实现数字无损直播；
- ④⑮ Type-C电脑接口：兼容Windows7以上、MAC OSX系统，连接电脑可自动识别驱动，即插即用；
- ④⑯ 供电接口：通过配送的“电脑数据线”为声卡供电，声卡支持边充边用；
- ④⑰ 电源开关：开启或关闭声卡电源。

■ 使用说明



一、操作说明

- 1、打开声卡电源开关，将声卡上的麦克风音量及耳机音量调到最小；
- 2、将话筒通过公母卡侬线的公卡侬一端连接到声卡背面标有“🎤”符号的话筒接口，如果连接的是需要48V供电专业电容麦克风，则需要打开48V开关，动圈麦克风则不用打开48V开关。免电源的电容话筒可以接到声卡背面标有“🔌”符号的话筒接口；

3、如果有乐器设备需要连接的话，通过“Φ6.35mm音频线”的一端连接到声卡背面标有“🎸”符号的乐器接口，然后将“Φ6.35mm音频线”的另一端与乐器输出接口连接；

4、将耳机连接到声卡前面的耳机接口，如果耳机插头是Φ3.5mm规格的，可以直接连接到标有“🎧”的第二路耳机接口，如果需要连接到第一路耳机接口，则需要通过配送6.35mm转换插头进行转接；

5、连接直播手机，方法有两种：一种是通过Φ3.5mm接口模拟信号连接，另一种是通过Type-C接口数字信号连接。Type-C连接为高清数字无损传输，具有立体声，高保真，高动态，低噪声，低干扰等优点，因此推荐用数字连接的方法；

A. Type-C连接方法：使用声卡配送的“C2-5 OTG数据线”进行连接，将“C2-5 OTG数据线”插头上标有“📱”符号的一端与声卡背面标有“📱”符号的Type-C接口连接，再将“C2-5 OTG数据线”插头上标有“📱”符号的一端与苹果或安卓手机连接，最后将“C2-5 OTG数据线”插头上标有“🔌”符号的一端与适配器或者移动电源连接，支持边给手机充电边直播，告别直播续航时间不足的烦恼；

B. Φ3.5mm连接方法：使用声卡配送的“直播音频线”进行连接，将“直播音频线”的一端与声卡上标有“📱”符号的Φ3.5mm手机接口连接，再将“直播音频线”的另一端与手机的Φ3.5mm接口连接，如果手机没有Φ3.5mm接口的，则需要通过“OTG转接头”进行转接（OTG转接头需自行另购）；

6、电脑连接方法，使用声卡配送的“电脑数据线”进行连接，将“电脑数据线”一端与声卡背面标有“🖥️”符号的接口连接，再将“电脑数据线”另一端与电脑的USB端口连接；

MX3 调音台式直播声卡

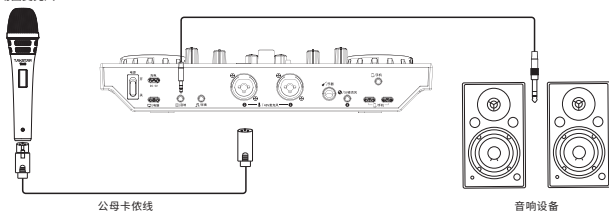
7、连接伴奏手机，方法有两种：一种是通过 $\Phi 3.5\text{mm}$ 接口模拟信号连接，另一种是通过蓝牙信号连接。

A. $\Phi 3.5\text{mm}$ 连接方法：使用声卡配送的“直播音频线”进行连接，将“直播音频线”的一端与声卡上标有“🎵”符号的伴奏接口连接，再将“直播音频线”的另一端与手机的 $\Phi 3.5\text{mm}$ 接口连接，如果手机没有 $\Phi 3.5\text{mm}$ 接口的，则需要通过“OTG转接头”进行转接（OTG转接头需自行另购）；

B. 蓝牙连接方法：首次使用蓝牙时，需要进行蓝牙配对连接，方法如下：打开声卡电源开关，蓝牙默认开启，蓝牙指示灯蓝灯闪烁，表示蓝牙正在搜索配对状态。进入手机的“设置”菜单，找到蓝牙功能选项，开启手机的蓝牙功能，待搜索到“TAKSTAR MX3”，点击进行连接，当蓝牙指示灯恢复常亮，表示蓝牙连接成功。下次打开蓝牙功能时，如果已有连接过蓝牙，则自动回连。蓝牙连接成功的情况下，点按蓝牙按键断开蓝牙，指示灯熄灭。长按蓝牙按键清除蓝牙连接，指示灯闪烁，同时有提示音“嘟嘟”。长时间没有连接蓝牙设备时，蓝牙功能将自动关闭，此时点按蓝牙按钮则重新启动蓝牙功能。

8、音响连接方法，根据使用的音箱的输出接口规格不同匹配相应的音频线材，将音频线的一端与音箱的输出接口连接，另一端与声卡背面标有“🔊”符号的接口连接；

动圈麦克风



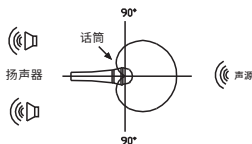
公母卡侬线

音响设备

MX3 调音台式直播声卡

提示：为了避免连接音箱K歌时容易产生啸叫的问题，连接音箱K歌建议使用动圈话筒，不要使用电容话筒。将动圈话筒的拾音部分背对音箱，同时保持适当距离，减少话筒音量或音箱输出音量。

麦克风使用示意图：



9、将声卡上的麦克风音量、乐器音量、耳机音量调到合适的位置，因不同麦克风、乐器及耳机的灵敏度及阻抗不同，调节的音量范围也有所不同，具体调节范围请咨询专业技术人员；

10、按个人需要调节好其它相关功能参数（具体调节方法请咨询专业技术人员），开启手机直播之旅。

11、充电说明

MX3声卡充电与数据传输独立设计，避免信号传输产生电流干扰，当声卡电量告急时，可连接移动电源或电源适配器，支持边充电边使用，告别声卡续航时间不足的烦恼。

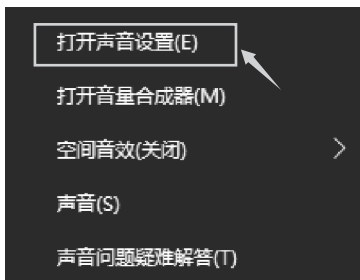
- ①开启声卡电源开关，电量指示灯不亮，说明声卡没电；电量指示灯剩下一格电时，说明声卡电量不足，需及时充电；
- ②充电时，电量指示灯逐格流水点亮，表示正在充电中；充满电后，电量指示灯满格显示；使用5V直流电源充电，约4小时即可充满；当电池电量充满时，请停止对电池充电，避免电池过充。
- ③初次使用时，建议先充满电；如长时间不使用，要每半年给声卡充一次电，避免电池过放，对电池性能产生影响。

二、电脑设置

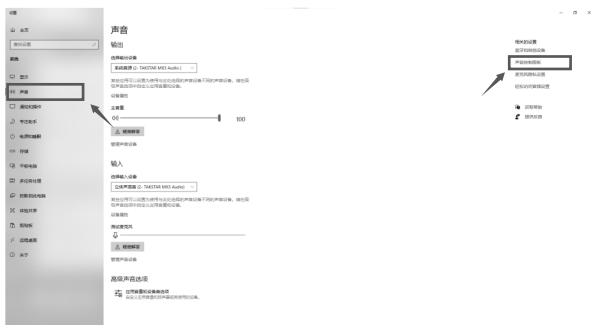
在电脑上使用MX3声卡时，需将音频选项设置为“TAKSTAR MX3 Audio”，以Windows10和MAC OS系统为例，其他版本的系统操作方法相似，此处不再赘述。

Windows10系统设置

1、鼠标右键单击右下角的扬声器图标，选择“打开声音设置”；



2、选择“声音控制面板”，进入“声音”设置对话框；



3、在“声音”对话框中选择“录制”选项，将“立体声混音”设备设置为默认设备；



4、双击“立体声混音”进入立体声混音属性，选择“级别”选项，将录制音量调整为100%。如图所示：



5、在立体声混音属性对话框中选择“侦听”选项，查看“侦听此设备”是否为勾选状态，如果是的话，请取消勾选；



6、在“声音”对话框中选择“播放”选项，将“TAKSTAR MX3 Audio”设置为默认设备。如图所示：



MX3 调音台式直播声卡

7、双击“TAKSTAR MX3 Audio”进入播放属性，选择“级别”选项，将播放音量调整为适当的音量，建议调整到100%的音量。如图所示：



8、播放器设置方法：以QQ音乐为例，输出设备选择“TAKSTAR MX3 Audio”可发送伴奏信号给直播间，选择“TAKSTAR MX3 Audio”时，开启连麦功能，音乐不传输给直播间；开启闪避说话时，音乐会自动压低；



MX3 调音台式直播声卡

9、主播特效软件的使用方法，主播特效软件只兼容Windows系统，可通过登录得胜官网的MX3声卡详情页面进行下载。

A、主播特效软件可以根据自己需要的音效在特效软件里加载储存到声卡上，例如想把特效软件里的“出场音效”加载到声卡的A键上，操作方法如下：

- ① 通过配送的电脑数据线连接电脑，打开MX3声卡主播特效软件；
- ② 鼠标右键点击“出场音效”，选择“载入设备”选项，然后有按键A、按键B、按键C、按键D四个选项，分别对应声卡A、B、C、D四个按键，如需将特效加载到按键A上，则选择按键“按键A”，出现文字提示“数据传输中，请稍后”，并伴随进度条提示加载进度，等待提示文字消失后音效加载完成。



MX3 调音台式直播声卡

B、热键（即快捷键）功能，可以通过点按电脑键盘上的按键来实现播放音效，而无需用鼠标点击音效，使用更方便。例如想把特效软件里面的“出场音效”设置快捷键，操作方法如下：

- ① 鼠标右击“出场音效”，选择“设置热键”选项（如该音效设置过快捷键，则为选择“修改热键”），在“请输入热键”对话框里按下相应的按键，如选F3，然后确定即可。
- ② 鼠标右击“出场音效”，选择“删除热键”选项，则把该音效的快捷键功能去除。



MAC OS系统设置

1、将配送的“C2-5 OTG数据线”插头上标有“ Ψ ”符号的一端与声卡背面标有“ \square ”符号的Type-C接口连接，再将“C2-5 OTG数据线”插头上标有“ \square ”符号的一端与苹果电脑连接（如果电脑是USB接口，则使用配送的“电脑数据线”连接），苹果电脑自动安装驱动程序；

MX3 调音台式直播声卡

2、双击打开“系统偏好设置”，选择“声音”，打开“声音”对话框，如下图所示；



3、单击“输入”选项，选择“TAKSTAR MX3 Audio”作为声音输入设备，拖动“输入音量”至100%状态；



4、在“输出”选项中，选择“TAKSTAR MX3 Audio”作为声音输出设备，将“输出音量”调整为适当的音量，建议调整到100%的音量，如下图所示。



三、手机设置

iOS系统设置

- 1、通过配送的“C2-5 OTG数据线”连接手机，连接方法详见操作说明的“连接直播手机”部分；
- 2、下滑或上滑手机屏幕，出现设置页面，点击右上角的具有“🔊”图标窗口；
- 3、在出现的对话框中查看喇叭设备是否显示为“TAKSTAR MX3 Audio”，如是，说明麦克风与手机连接成功。如图所示：



Android系统设置

声卡兼容大部分带OTG功能的智能安卓手机，可能有部分型号手机和应用软件会限制OTG功能，这并不是声卡质量原因导致的，请您与您的移动设备供应商确认您的手机是否支持OTG功能。如OPPO、VIVO品牌的部分手机需要打开OTG功能才能使用。



■ 安全警示

为避免电击、高温、着火、辐射、爆炸、机械危险以及使用不当等可能造成的人身伤害或财产损失，使用本产品前，请仔细阅读并遵守以下事项：

1. 使用产品时请确认所连设备与本产品是否匹配以及合理调整音量大小，不要在超过产品功率及大音量下长时间使用，以免造成产品异常和听力损伤；
2. 使用中若发现有异常（如冒烟、异味等），请立即关闭电源开关并拔掉电源插头，然后将产品送售后服务网点检修；
3. 本产品及配件都应放置在室内干燥通风处，请勿长期存放在潮湿、灰尘多的环境，使用中避免靠近火源、雨淋、进水、过度碰撞、抛掷、振动本机及覆盖通风孔，以免损坏其功能；
4. 本产品不得遭受水滴或水溅，产品上不得放置诸如花瓶类的装有液体的物品；
5. 对本设备进行清洁时，请务必将电源插头从电源插座中拔出并关闭声卡电源开关。清洁设备时，建议使用柔软的干布，请勿使用涂料稀释剂、溶剂、清洁液或浸了化学物质的抹布；
6. 使用该产品时需遵守相关安全规定，法律法规明确禁止使用场合请勿使用本产品，以免导致意外事故；
7. 请使用制造商指定的附件；
8. 请不要自行拆机改装或维修，以防止出现人身伤害，如有问题或服务需求请联系当地售后服务网点跟进处理。未经同意对本设备进行自行拆机改装或维修，可能会失去由广东得胜电子有限公司提供的保修服务；

■ 关于图标含义解释



此符号表示，根据WEEE指令(2012/19/EU)和国家法律，由于这种类型的废弃物会有潜在的有害物质，可能对环境 and 人类健康产生负面影响，所以本产品不应与您的家庭垃圾一起处置，应将本产品交由授权的电气和电子设备（WEEE）回收站回收。同时，您在正确处理本产品的同时将有助于自然资源的有效利用。如需了解更多有关您可以在何处放置废物回收设备的信息，请联系您当地的城市办事处、废物管理局或家庭废物处理服务部门。

■ 关于本说明书

本说明书中内容符合截止印刷之日的技术规格。由于得胜公司会不断改进产品，本说明书可能不符合您的特定产品的技术规格。要获取最新版说明书，请访问得胜官网，然后下载说明书文件。技术规格、设备或另售的附件在各个地区可能有所不同，如有问题请与当地得胜销售网点确认。如需更多支持和深层产品信息，请浏览得胜官方网站：<https://www.takstar.com>

■ 环保说明

产品中有毒有害物质或元素的名称及含量标识表

部件名称	有毒有害物质或元素					
	铅 (Pb)	汞 (Hg)	镉 (Cd)	六价铬 (Cr(VI))	多溴联苯 (PBB)	多溴二苯醚 (PBDE)
塑料部件	○	○	○	○	○	○
金属部件	×	○	○	○	○	○
电路板组件	×	○	○	○	○	○
线缆	×	○	○	○	○	○

本表格依据SJ/T 11364的规定编制。

○: 表示该有害物质在该部件所有均质材料中的含量均在 GB/T 26572规定的限量要求以下。

×: 表示该有害物质至少在该部件的某一均质材料中的含量超出 GB/T 26572规定的限量要求。

此标志为产品的环保使用期限标志，
且此环保使用期限只适用于产品正常工作的温度和湿度等条件。



■ Preface

Dear Customer,

Thank you for purchasing Takstar MX3 Mixer Webcast Sound Card. In order to better understand and use the product, please read this manual carefully. If you have any questions or suggestions, please contact our local dealer.

■ Features

- Pro stage/studio-level reverb, adjustable reverb amount and time, improving your performance.
- Pro digital amplifier circuit with powerful amp and dynamics, compatible with various mics on the market.
- Separate control for mic 1/2 to cater for different vocal tuning requirements.
- 12-level noise reduction, adjustable based on your ambient environment.
- 12-level ducking, which can adjust the music recovery time as per your broadcast needs.
- Audio panning to quickly adjust left and right channel balance on the fly.
- With 16 audio FX preset buttons, including 4 customizable FX buttons to bring much fun to your stream.
- Colorful RGB effects, controlled via on-board lighting button.
- Three mic interfaces for handling multi-person broadcast.
- With $\varnothing 6.35\text{mm}$ instrument interface, suitable for instruments such as electric guitar and bass.

MX3 Mixer Webcast Sound Card

- Two OTG phone interfaces for lossless stereo transmission, usable with Apple and Android devices.
- Built-in high-capacity li-ion battery to secure about 5hrs unstopped stream.

■ System Requirements

Computer: Windows 7/8/10/11

USB Protocol: USB 1.1/2.0/3.0

MAC: macOS (10.10 or higher)

Phone: Android 6.0 or above, iOS 9.0 or above

■ Applications

Karaoke, webcast, recording

■ Package Contents

- MX3 Sound Card.....1 PCS
- \varnothing 3.5mm Audio Cable.....1 PCS
- C2-5 OTG Data Cable1 PCS
- Type-C Data Cable.....2 PCS
- \varnothing 3.5mm-to- \varnothing 6.35mm Adapter1 PCS
- User Manual.....1 PCS

■ Specifications

Sound Card Specifications

- Data Transmission: USB2.0
- Sampling Rate: 48KHz/16bit
- Frequency Response: 20Hz-20KHz(± 3 dB)
- THD: THD<0.5% 1KHz
- Headphone Output Power: 167.7mW/32 Ω
- Headphone S/N Ratio: 90dB (A-Weighted)
- Net Weight: about 966g
- Dimensions: 287*151*58mm (L*W*H)
- Frequency Range: 2400-2483.5MHz
- Modulation Methods: GFSK, $\pi/4$ DQPSK, 8DPSK
- Occupied Bandwidth: ≤ 3 MHz
- Transmit Power: ≤ 20 dBm (EIRP)

Battery Specifications

- Battery Type: Li-ion battery
- Charging: DC 5V/1A
- Battery Capacity: 4400mAh
- Charging Time: about 4hrs
- Use Time: about 5hrs (48V off)
about 4hrs (48V on)
- Charging Temp.: 0~45°C
- Working Temp.: -10~60°C

Connector Specifications

- 2 * Headphone Connector ($\phi 6.35$ mm, $\phi 3.5$ mm)
- 1 * AUX Connector ($\phi 3.5$ mm)
- 3 * Microphone Connector (2 * XLR+ $\phi 6.35$ mm, $\phi 3.5$ mm)
- 1 * Instrument Connector ($\phi 6.35$ mm)
- 1 * Speaker Connector ($\phi 3.5$ mm)
- 1 * Computer Connector (Type-C)
- 3 * Phone Connector (2 * Type-C, 1 * $\phi 3.5$ mm)
- 1 * Charging Connector (Type-C)

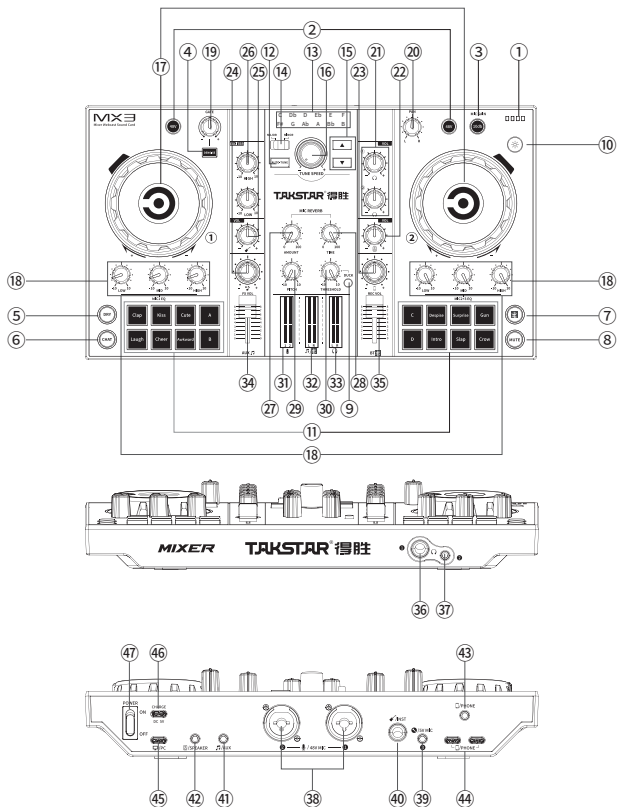
MX3 Mixer Webcast Sound Card

Note on the operating temperature: It is recommended to use the sound card within the normal temperature range to ensure the best performance and safety of the battery. Using the sound card in a hot environment above its operating temperature range may permanently reduce battery life.

Using the sound card in a cold environment below its operating temperature range may temporarily reduce battery life and may cause the sound card to shut down. When returning it to a warmer environment, battery life will return to normal. If the temperature is too low, the sound card may not be able to charge, or may stop charging.

Note: The above data are measured by Takstar laboratory which has the final interpretation right!

■ Function Descriptions



MX3 Mixer Webcast Sound Card

- ① **Battery LED:** The battery meter has four bars, each bar represents 25% power. When there is only one bar left, the battery LED illuminates red, indicating low power and requires charging in time. While charging, the four bars light up one by one; when fully charged, all four bars light up.
- ② **48V switch:** There are two 48V buttons. Press to turn on/off 48V power supply for MIC1 or MIC2 respectively. The 48V LED illuminates red when ON and goes off when OFF.
- ③ **10dB switch:** Mic gain switch. Press to enable/disable mic gain for MIC1, MIC2, MIC3. The 10dB LED illuminates blue when enabled and goes off when disabled.
- ④ **Denoise button:** Press to enable/disable noise cancellation, which shields pickup of ambient noise. The denoise LED illuminates green when enabled, and goes off when disabled.
- ⑤ **Dry button:** Press to enable/disable dry audio for MIC1-3. Dry audio removes audio effects. The dry LED illuminates blue when enabled and goes off when disabled.
- ⑥ **Mic chat button:** Press to enable/disable mic chat function, which controls whether the accompaniment played in computer software is mixed/output to your live stream. If enabled, its LED illuminates green, and the accompaniment is not mixed. And if disabled, its LED goes off, and the accompaniment is mixed.
- ⑦ **Bluetooth button:** The LED flickers when Bluetooth is enabled and pairing; illuminates solid light when paired successfully, and goes off when disabled. Refer to "Bluetooth Pairing" for detailed pairing methods.

MX3 Mixer Webcast Sound Card

- ⑧ Mute button: Press to mute/unmute the mic. It illuminates red when mic is muted which prevents the mic from audio pickup, and goes off when unmuted.
- ⑨ Duck button: Press to enable/disable ducking function which can lower music volume as you talk. It illuminates red when enabled and goes off when disabled.
- ⑩ Light control button: Press to switch among 14 lighting effects, including five single-color modes, seven-color breathing mode, and eight mixed color modes.
- ⑪ FX buttons: There are 16 special effect buttons in total, including 12 fixed FX buttons, and 4 custom FX buttons, namely button A, B, C, and D, which can be customized via provided computer software. Refer to "Customizing special effects" for details. Each FX button is illuminated with a solid light. When pressed, the FX button plays its corresponding special effect, and flashes 3 times in animating fashion until the special effect finishes playing. You can press the FX button again while it's playing to stop the effect playback and strobe light immediately.
- ⑫ Auto-Tune button: Press to enable/disable auto-tune function. It illuminates orange when enabled and goes off when disabled.
- ⑬ Key indicators: 12 indicators for 12 auto-tune keys, which are, C, Db, D, Eb, E, F, F#, G, Ab, A, Bb, B. Respective indicator illuminates orange when selected.
- ⑭ Major/Minor switch: Turn to MAJOR/MINOR position to set major/minor key for auto-tune.
- ⑮ Key select buttons: Press ▲ to select auto-tune key in sequence from right to left, or press ▼ to select from left to right.

MX3 Mixer Webcast Sound Card

- ⑩ Tune speed knob: When auto-tune is enabled, rotate it clockwise to increase auto-tune intensity, and vice versa. This knob has no effect when auto-tune is disabled.
- ⑪ MIC volume knob: Control the volume of MIC1 and MIC2+3 respectively. Rotate clockwise to increase, and vice versa. Its surrounding ring LED lights up or goes out gradually in accordance with the volume level you set.
- ⑫ MIC EQ knob: Control the treble, mid and bass of MIC1 or MIC2+3 respectively. Rotate clockwise to increase, and vice versa.
- ⑬ Noise gate knob: Effective only if denoise function is enabled. Adjust the noise reduction amplitude of MIC1-3. Rotate clockwise to increase, and vice versa. Adjust according to the ambient noise level. The noisier, set the higher noise gate, and vice versa.
- ⑭ PAN knob: Adjust the left and right balance of the sound channel. Normal when set to the middle.
- ⑮ Headphone volume knob: 2 headphone volume knobs for adjusting the volume of headphone 1-2 respectively. Rotate clockwise to increase the volume, and vice versa.
- ⑯ Speaker volume knob: Adjust the speaker output volume. Rotate clockwise to increase the volume, and vice versa.
- ⑰ Recording volume knob: Adjust the volume output to the mobile phone. Rotate it clockwise to increase the volume, and vice versa.
- ⑱ FX volume knob: Adjust the special effect output volume. Rotate it clockwise to increase the volume, and vice versa.

MX3 Mixer Webcast Sound Card

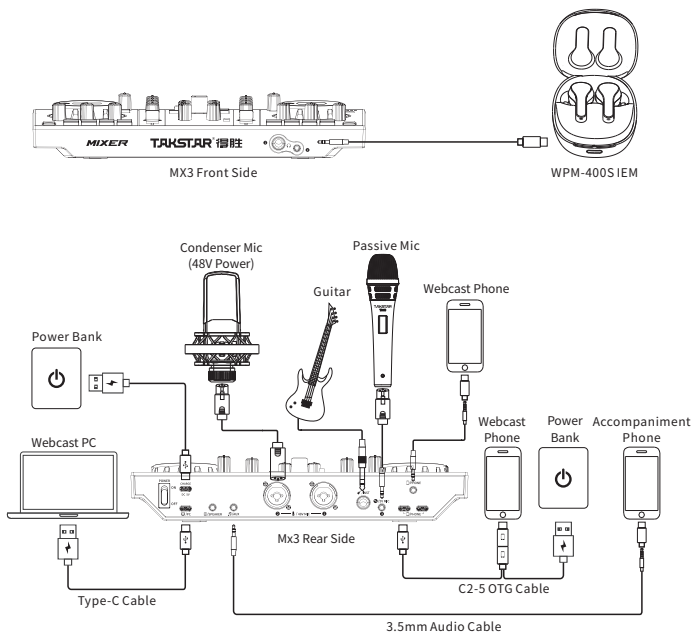
- ②5 Instrument volume knob: Adjust the volume of the instrument. Rotate it clockwise to increase the volume, and vice versa.
- ②6 Exciter knob: Adjust the highs and lows quality of human voice picked up by the mic. Turn it clockwise to increase, and vice versa.
- ②7 Reverb volume knob: Adjust the volume of the mic reverberation. Turn it clockwise to increase the volume, and vice versa.
- ②8 Reverb time knob: Adjust the mic reverberation duration. Turn it clockwise to increase, and vice versa.
- ②9 Pitch knob: Adjust to the middle to set as normal. Turn it clockwise from the middle to make the sound sharper, and counterclockwise from the middle to make the sound deeper.
- ③0 Duck threshold knob: Effective only when the duck function is turned on, which can suppress the BGM playback from AUX input, Bluetooth and computer playback whenever you talk. For adjusting the duck threshold of MIC 1-3. Turn it clockwise to increase the suppression level, and vice versa.
- ③1 Mic volume meter: Display the volume of the mic. The LED meter varies as the mic volume changes.
- ③2 AUX volume meter: Display the volume of the AUX/accompaniment input. The LED meter varies vary as the AUX volume changes.
- ③3 Monitor volume meter: Display the volume of monitor output. The LED meter varies as the monitor volume changes.
- ③4 External audio source fader: Adjust the volume of the AUX input. Push it from bottom to top to gradually increase the volume, and vice versa.

MX3 Mixer Webcast Sound Card

- ③⑤ Bluetooth accompaniment fader: Adjust the playback volume of Bluetooth. Push it from bottom to top to gradually increase the volume, and vice versa.
- ③⑥ Headphone jack 1: \varnothing 6.35mm stereo headphone jack.
- ③⑦ Headphone jack 2: \varnothing 3.5mm stereo headphone jack.
- ③⑧ Mic interface 1-2: 2 XLR & 6.35mm combo mic interfaces, for connecting 48V condenser mic or dynamic mic.
- ③⑨ Mic 3 interface: \varnothing 3.5mm interface for connecting to a dynamic mic or a condenser mic that does not require external power.
- ④⑩ Instrument interface: \varnothing 6.35mm monophonic instrument interface, used to connect guitars, electric pianos and other instruments.
- ④⑪ Accompaniment interface: Connect with external audio source through the AUX cable for playing accompaniment.
- ④⑫ Speaker interface: \varnothing 3.5mm stereo speaker output interface.
- ④⑬ \varnothing 3.5mm phone interface: \varnothing 3.5mm phone interface for connecting to a mobile phone for live broadcast.
- ④⑭ Type-C phone interface: Support OTG function, and can achieve lossless digital transmission by connecting with mobile phone through the supplied C2-5 OTG data cable.
- ④⑮ Type-C computer interface: Compatible with MAC OSX system, Windows 7 and above. Plug-and-play with auto driver recognition.
- ④⑯ Power supply interface: For supplying power to the sound card through the supplied USB cable. Support charging and use at the same time.
- ④⑰ Power switch: Turns on/off power of the sound card.

MX3 Mixer Webcast Sound Card

■ Operating Instructions



I. Operating Steps

1. Lower the mic volume and headphone volume on the sound card to the minimum before powering it up.

MX3 Mixer Webcast Sound Card

2. Connect the mic by hooking up the male end of the XLR mic cable to the mic interface marked with "🎤" on the back of the sound card. If you are using a condenser mic that requires 48V phantom power, please turn on the 48V switch. Passive condenser mic can also be connected to the mic interface marked with "🎧".
3. To connect a musical instrument, hook up one end of the ø6.35mm audio cable to the instrument interface marked with "🎸" on the back of the sound card, and the other end to the instrument's output port.
4. To connect a pair of headphones, if the headphone plug is ø3.5mm, simply plug it into the second headphone output marked with "🎧", or into the first headphone output using the supplied ø6.35mm adapter.
5. To connect a mobile phone for live stream, there are two methods: a). via ø3.5mm analog connection; or b). via Type-C digital connection. It's recommended to use Type-C digital connection as it is high-definition lossless transmission that offers benefits such as stereo, high fidelity, high dynamic, low noise and low interference.
 - A. Type-C connection: Connect via the supplied C2-5 OTG cable, with the cable end marked with "🔌" hooked up to the Type-C interface marked with "📱" on the sound card, the cable end marked with "📱" to your iPhone or Android phone, and the cable end marked with "🔌" to a power adapter or power bank for simultaneous charging of your phone as you live stream.
 - B. ø3.5mm connection: Connect via the supplied audio cable, with one end hooked up to the ø3.5mm interface marked with "📱" on the sound card, and the other end to the ø3.5mm interface of your phone. If your

MX3 Mixer Webcast Sound Card

phone does not have a ø3.5mm interface, use an OTG adapter (not included).

6. To connect a computer, connect via the supplied Type-C data cable, with the cable Type-C end hooked up to the interface marked with "☐" on the sound card, and the other end to the computer USB port.

7. To connect an accompaniment phone, there are two methods: a). via ø3.5mm analog connection; or b). via Bluetooth connection.

A. ø3.5mm connection: Connect via the supplied audio cable, with one end hooked up to the interface marked with "♪" on the sound card, and the other end to the ø3.5mm interface of your phone. If your phone does not have a ø3.5mm interface, use an OTG adapter (not included).

B. Bluetooth connection: You need to pair the Bluetooth upon first use following below method:

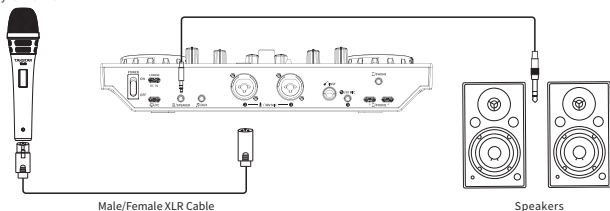
Power up the sound card, and by default, it will enable Bluetooth, with the Bluetooth indicator flashing blue while it searches for device to pair. Enter the settings of your phone, find and enable Bluetooth, wait until "TAKSTAR MX3" is discovered, then tap on it to connect. Once connected successfully, the flashing Bluetooth indicator becomes solid blue. The device will automatically connect to previously paired device the next time you enable Bluetooth. While Bluetooth is connected, press the Bluetooth button to disconnect, and its indicator will go off. Press and hold the Bluetooth button to clear pairing history, accompanied by flashing indicator light and "DuDu" prompt tone. Bluetooth function will turn off automatically if without connection for a long time. In this case, you can

MX3 Mixer Webcast Sound Card

press the Bluetooth button again to re-enable it.

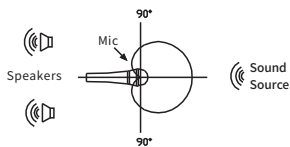
8. To connect speakers, use audio cable according to the specification of the speaker output interface, with one end hooked up to the speaker output, and the other end to the interface marked with "8" on the sound card.

Dynamic Mic



Note: To avoid feedback howling while using speakers for karaoke, it's recommended to use dynamic mics instead of condenser mics, point the mic pickup away from the speakers and keep a proper distance in between, lower the mic volume or the speaker output volume.

Mic usage illustrations:



9. Adjust the volumes for mic, instrument and headphones to their appropriate levels respectively, as their sensitivity and impedance vary and thus require different volume levels. As for the appropriate range, consult a professional if necessary.

10. Adjust other parameters as per your preference (consult a professional if necessary) and start your live stream.

11. Charging instructions:

The charging design of the MX3 sound card is separated from its data transmission to avoid interference from electric charging current during signal transmission. Therefore, you can charge and use the sound card at the same time via a power bank or a power adapter.

- ① Turn on the power switch of the sound card, if the battery meter light is off, it means that the sound card is out of power; if the battery meter only lights up one bar, it means lower power and requires charging.
- ② While charging, the four bars of the battery meter light up one by one; when fully charged, all four bars light up. Charging via 5V DC power supply will take about 4 hours to a full charge. When the battery is fully charged, please stop charging the battery to avoid overcharging.
- ③ Upon first time, it is recommended to fully charge the device first. If not used for extended periods, it is necessary to charge the sound card once every six months to avoid battery over-discharging, which will affect the battery performance.

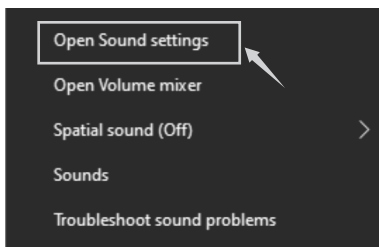
MX3 Mixer Webcast Sound Card

II. Computer Settings

When using the MX3 sound card on the computer, you need to set the audio option to "TAKSTAR MX3 Audio". Below examples are based on Windows 10 and Mac OS, but the methods on other operating systems are similar and will not be illustrated here.

Windows 10 settings

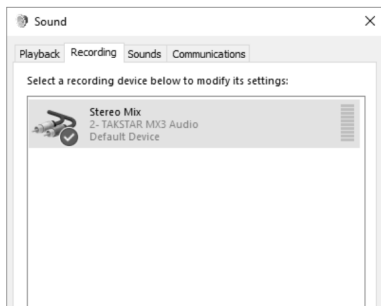
1. Right-click the speaker icon in the lower right corner and select "Open Sound Settings".



2. Select "Sound Control Panel" to enter the "Sound" setting dialog.

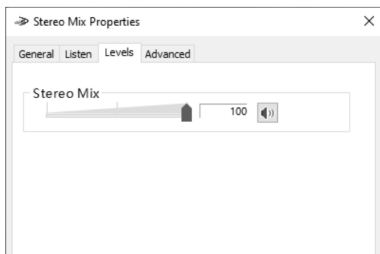


3. Select "Recording" tab in the "Sound" dialog, and set the "Stereo Mix" device as the default device.

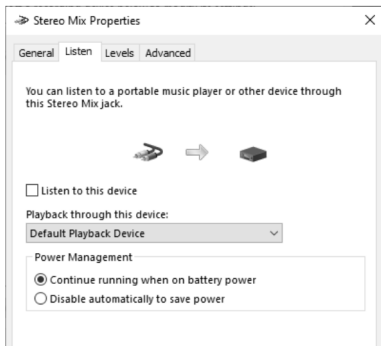


MX3 Mixer Webcast Sound Card

4. Double-click "Stereo Mix" to enter the stereo mix properties, select "Level" tab, and adjust the recording volume to 100%, as shown below.

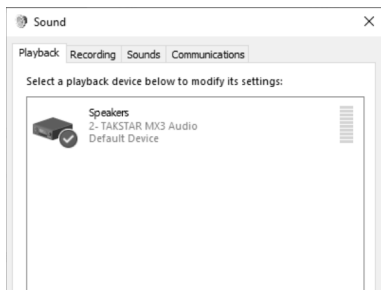


5. Select "Listen" tab in the Stereo Mix Properties dialog, uncheck "Listen to this device" if not yet.

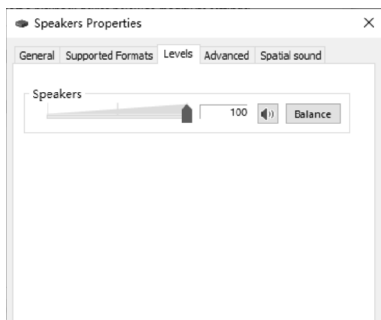


MX3 Mixer Webcast Sound Card

6. Select "Playback" tab in the "Sound" dialog, and set the "TAKSTAR MX3 Audio" as the default device, as shown below.

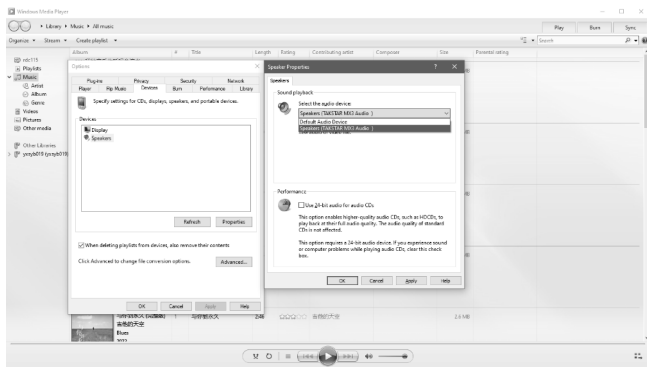


7. Double-click "TAKSTAR MX3 Audio" to enter the playback properties, select "Level" tab, and adjust the playback volume to an appropriate volume. It is recommended to adjust the volume to 100%, as shown below.



MX3 Mixer Webcast Sound Card

8. Music player settings: Take Windows Media Player as an example, if you want to send its music playback to your broadcast, simply set "TAKSTAR MX3 Audio" as the output device. You can then enable the mic chat function to stop sending the music playback whenever necessary, or use the ducking function to automatically suppress the music signal whenever you talk.



MX3 Mixer Webcast Sound Card

9. You can customize the broadcast effects via the FX customization tool, which is only compatible with Windows system and can be downloaded from the MX3 product page from Takstar's official website.

A. You can load your favorite sound effect to the sound card. For example, to add an entry sound effect onto button A on the sound card, follow below steps:

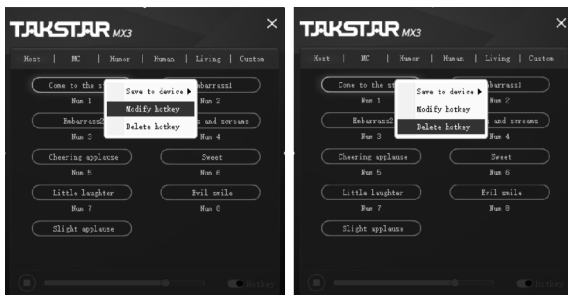
- ① Connect the sound card to your computer via the supplied Type-C cable, and open the MX3 FX customization tool.
- ② Right-click on "Entry sound effect", select "Save to Device", and then "Button A" from the four button options. Then a text prompt "Data transmitting, please wait" will appear, followed by a progress bar. Wait until the prompt text disappears to finish uploading the sound effect.



MX3 Mixer Webcast Sound Card

B. Hotkey (shortcut key) allows you to execute specific sound effect by pressing certain buttons on your computer keyboard without manually clicking. For example, to set the entry sound effect to a key binding, follow below methods:

- ① Right-click on "Entry sound effect", select "Set hotkey" (if the sound effect already has a shortcut, select "Modify hotkey" instead), then press the corresponding keys (e.g., F3) in the "Please enter a hotkey" dialog box, and then confirm.
- ② Right-click on "Entry sound effect" and select "Delete hotkey" option to delete the shortcut key binding of the sound effect.

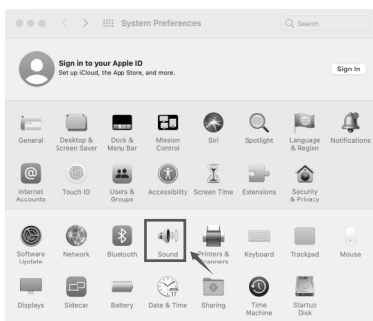
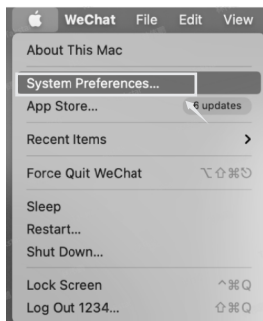


MX3 Mixer Webcast Sound Card

MAC OS Settings

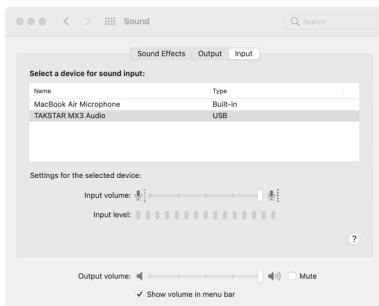
1. Connect the end of the supplied C2-5 OTG cable marked with "Ψ" to the TYPE-C interface marked with "☐" on the back of the sound card, and then the C2-5 OTG cable plug marked with "☐" to the Apple computer (use supplied Type-C cable if the computer uses USB-A port), and the Apple computer will automatically install the driver.

2. Double-click to open "System Preferences", select "Sound", and open the "Sound" dialog, as shown below.



MX3 Mixer Webcast Sound Card

3. Click the "Input" tab, select "TAKSTAR MX3 Audio" as the sound input device, and drag the "Input Volume" to 100%.



4. In the "Output" tab, select "TAKSTAR MX3 Audio" as the sound output device, and adjust the "Output Volume" to an appropriate volume. It is recommended to adjust the volume to 100%, as shown below.

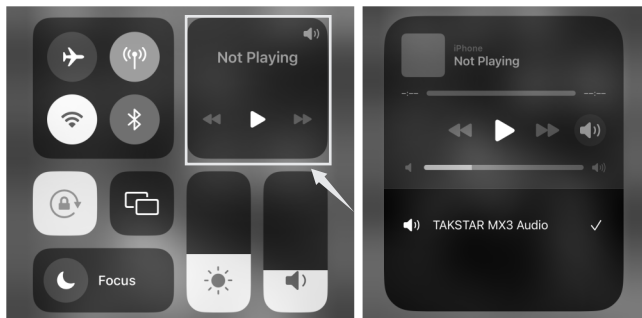


MX3 Mixer Webcast Sound Card

III. Phone Settings

iOS System Settings

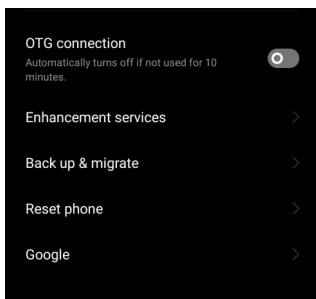
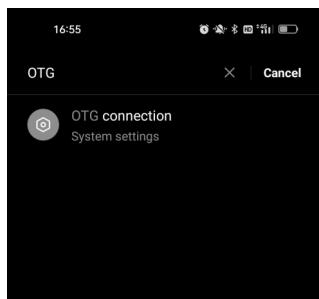
1. Connect the mobile phone via the supplied C2-5 OTG cable. For the connection method, please refer to the section on how to connect a phone for live stream.
2. Swipe down or up the screen of your phone, and the setting page will appear, then click the window with the "🔊" icon in the upper right corner.
3. In the dialog that appears, check whether the speaker device is displayed as "TAKSTAR MX3 Audio". If so, it means that the mic is connected to the phone successfully, as shows.



MX3 Mixer Webcast Sound Card

Android System Settings

Note: The sound card is compatible with most Android smartphones with OTG function. However, it may not work with certain smartphone models or apps due to incompatibility issues, which is not a quality issue. Please confirm with your device manufacturer on whether your device supports OTG function. For example, some smartphone models from OPPO and VIVO require enabling the OTG function manually.



■ Safety Instructions

To avoid electric shock, overheat, fire, radiation, explosion, mechanical risk and injury or property loss due to improper use, please read and observe the following items before use:

MX3 Mixer Webcast Sound Card

1. Please check if the power of the connected equipment matches with that of this product before operation. Adjust the volume to proper level during operation. Do not operate at over-power or high-volume level for extended time to avoid product malfunction.
2. If there is any abnormality during use (e.g., smoke, strange odor), please kill the power switch and unplug from power source, then send the product to the local after-sales service for repair.
3. Keep this product and its accessories in a dry and ventilated area. Do not store in a humid or dusty area for extended time. Keep away from fire, rain, liquid intrusion, bumping, throwing, vibrating, or from blocking any ventilation openings, to prevent malfunction.
4. Do not expose to water or splashes, and do not place liquid containers on top of the product, e.g., vases.
5. Unplug from power source before cleaning the device. Clean with a dry soft cloth. Do not use any thinner, solvent or cleaning agent.
6. Please abide by safety rules during operation. Do not use the product in places prohibited by laws or regulations to avoid accident.
7. Please use accessories designated by the manufacturer.
8. Do not disassemble or repair the product by yourself to avoid personal injury. If you have question or need service, please contact our local after-sales service. Unauthorized disassembly or repair may void the warranty.

■ Label Meanings



This symbol indicates that this product should not be disposed of with your household waste, according to the WEEE directive (2012/19/EU) and your national law. This product should be handed over to an authorized collection site for recycling waste electrical and electronic equipment (WEEE). Improper handling of this type of waste could have a possible negative impact on the environment and human health due to potentially hazardous substances that are generally associated with WEEE. At the same time, your cooperation in the correct disposal of this product will contribute to the effective usage of natural resources. For more information about where you can drop off your waste equipment for recycling, please contact your local city office, waste authority, or your household waste disposal service.

■ About This Manual

This manual contains up-to-date technical specifications as of printing. However, specifications contained herein may not conform to your particular product since Takstar is constantly improving its products. Also, specifications, devices or accessories available may vary from region to region. If you have any questions, please contact our local sales outlet. For the latest version/more information, please visit our website: <https://www.takstar.com/>



产品服务保证书

姓名：_____ 电话：_____ 地址：_____

商品：_____ 型号：_____ 购买日期：_____ 年 ___ 月 ___ 日

注意事项：

1. 本单为保修凭证，请用户妥善保管，如有遗失，恕不保修或退换。
2. 保修期限制：购买之日起十二个月内。
3. 除了不可抗力事件损坏外，由本公司负责，免费维修。
4. 如属保管不善或使用不当造成的损坏，维修点将酌情收费。
5. 擅自拆卸维修者，不予保修。
6. 以上保修条款仅限于中国市场适用（不包含港澳台地区）。

维修记录栏(由维修员填写)	维修员签名	日期



扫一扫，了解更多产品
Scan for more
product information

广东省电声工程技术研究开发中心 广东得胜电子有限公司制造

地址：广东省惠州市博罗县龙溪街道富康一路2号

服务热线：400 6828 333 传真：0752 6383950

邮箱：xs@takstar.com

网址：www.takstar.com

Guangdong Takstar Electronic Co., Ltd.

Address: No. 2 Fu Kang Yi Rd., Longxi Boluo

Huizhou, Guangdong 516121 China

Tel: 86 752 6383644 Fax: 86 752 6383952

Email: sales@takstar.com

Website: www.takstar.com

CMIIT ID: XXXXXXXXXXXX

中国制造 Made in China